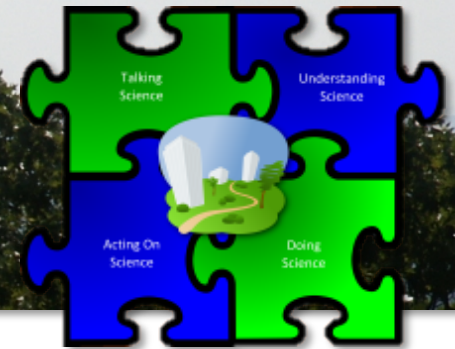


Urban EcoLab Curriculum

<http://www.urbanecolabcurriculum.com>



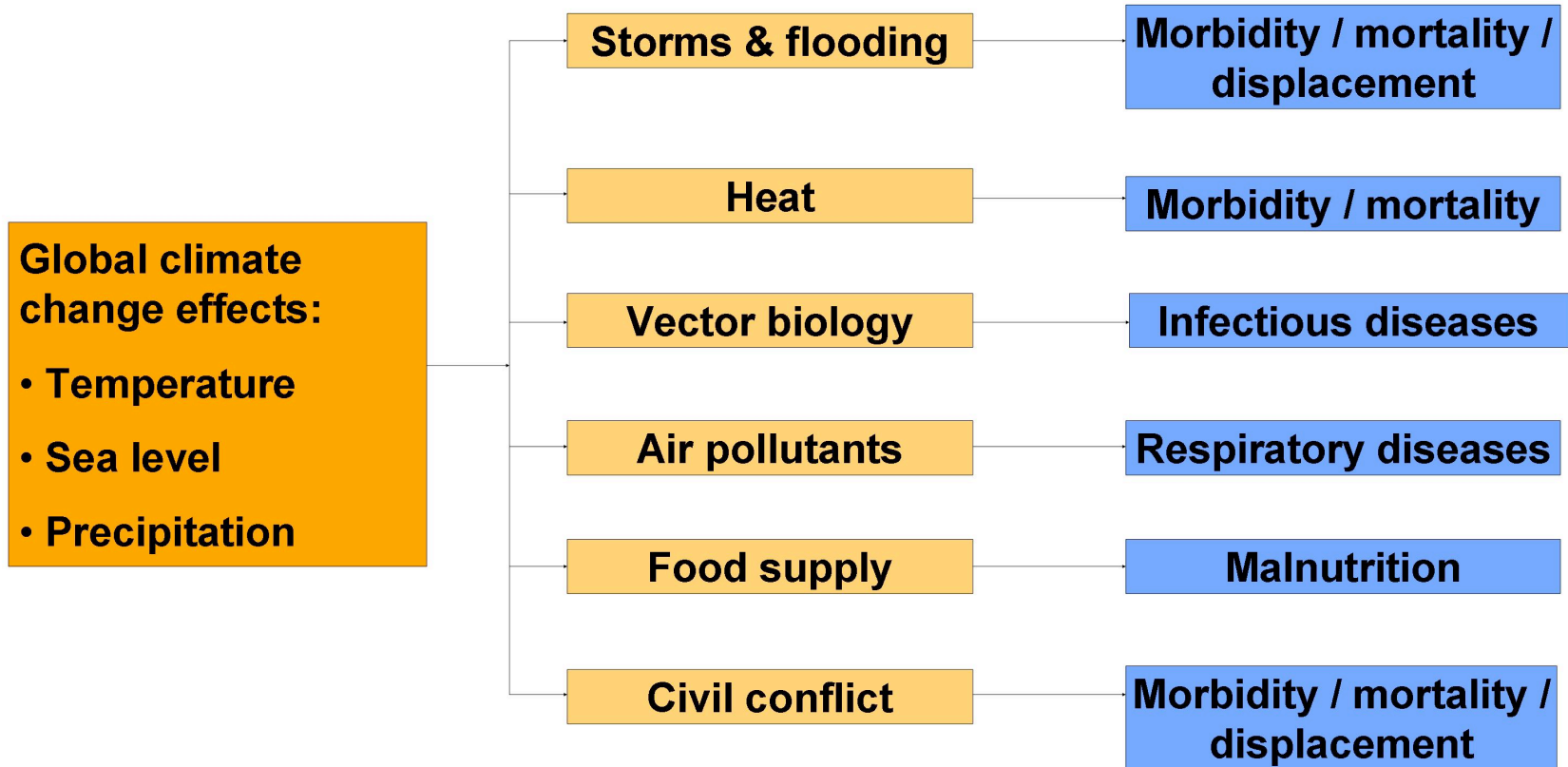
Global Warming

Module 3 Lesson 3



This material is based on work supported by the National Science Foundation ("NSF") under Grant No. 0607010. Any opinions, findings, and conclusions or recommendations expressed in this material are those of the authors and do not necessarily reflect the views of the National Science Foundation.

Potential Impacts of Global Climate Change on Human Health

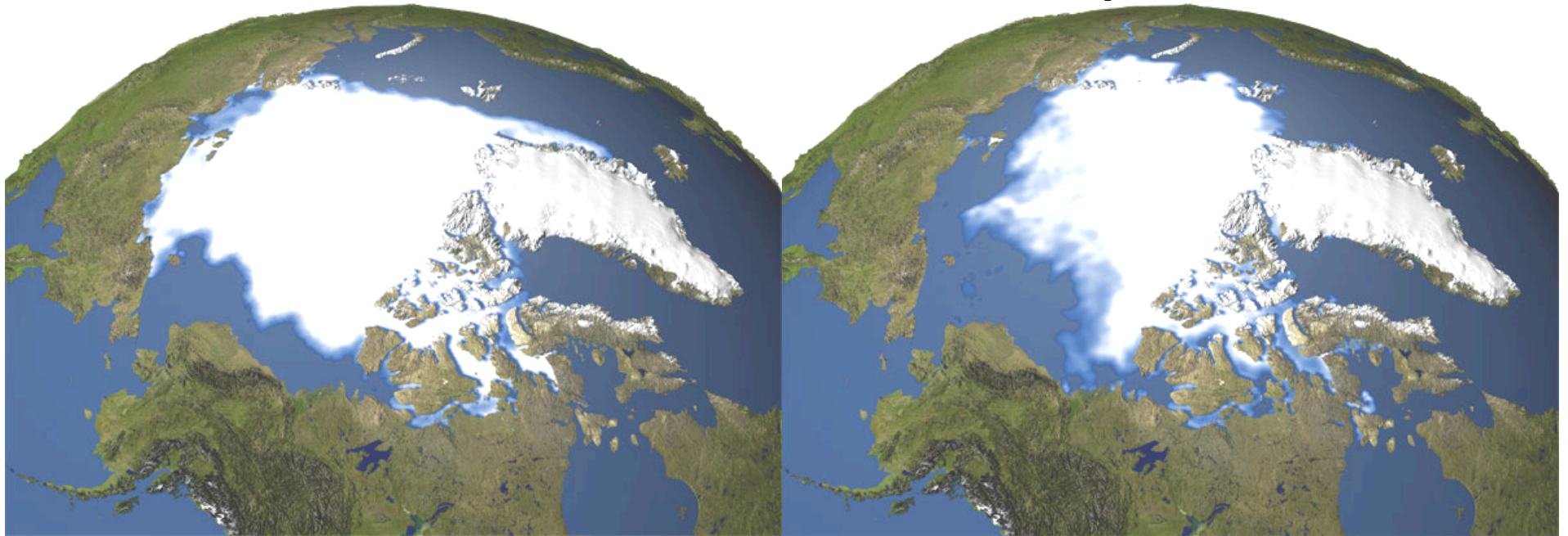


<http://health.state.tn.us/images/ClimateChangeImpacts.jpg>

Arctic Polar Ice Caps

1979

2003



<http://www.nasa.gov/centers/goddard/news/topstory/2003/1023esuice.html>

- Since 1979, the size of the summer polar ice cap has shrunk more than 20 percent.
- On Sept. 21, 2005, sea ice extent dropped to 2.05 million sq. miles, the lowest extent yet recorded in the satellite record.
- This loss is twice the size of Texas.
- Real problem -> ice caps are Earth's air conditioners!!!
 - Reflect the Sun's energy back into space

